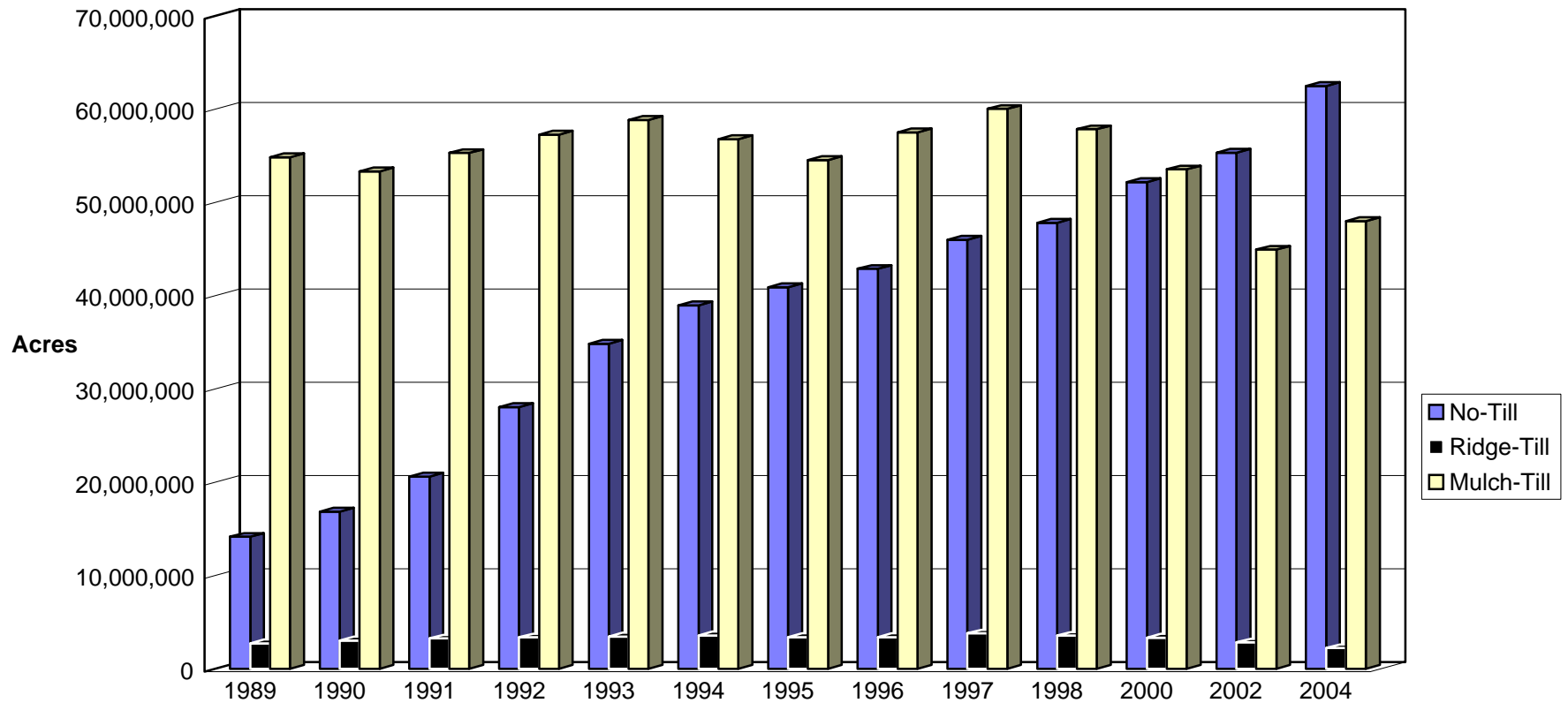


# Conservation Tillage Practices Practices Leaving >30% Residue Totals for United States--Annual Crops



Data Source: Conservation Technology Information Center (CTIC), National Crop Residue Management Surveys  
 (Beginning in 1998, the National Crop Residue Management Surveys have been published only in even numbered years)  
 Prepared by: Agronomy Department, Iowa State University