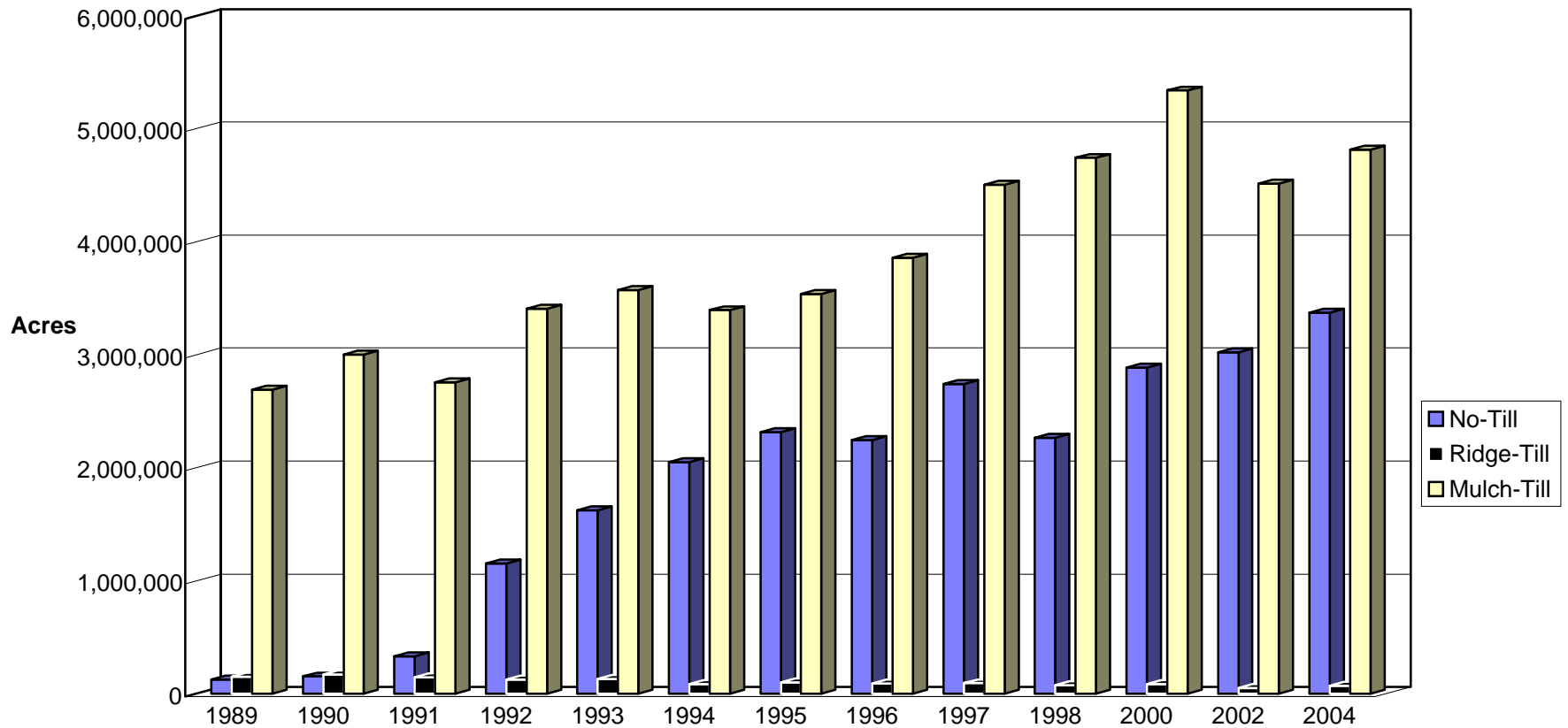


# Conservation Tillage Practices

## Practices Leaving >30% Residue

### Totals for Iowa--Full Season Soybeans



Data Source: Conservation Technology Information Center (CTIC), National Crop Residue Management Surveys  
 (Beginning in 1998, the National Crop Residue Management Surveys have been published only in even numbered years)

Prepared by: Agronomy Department, Iowa State University