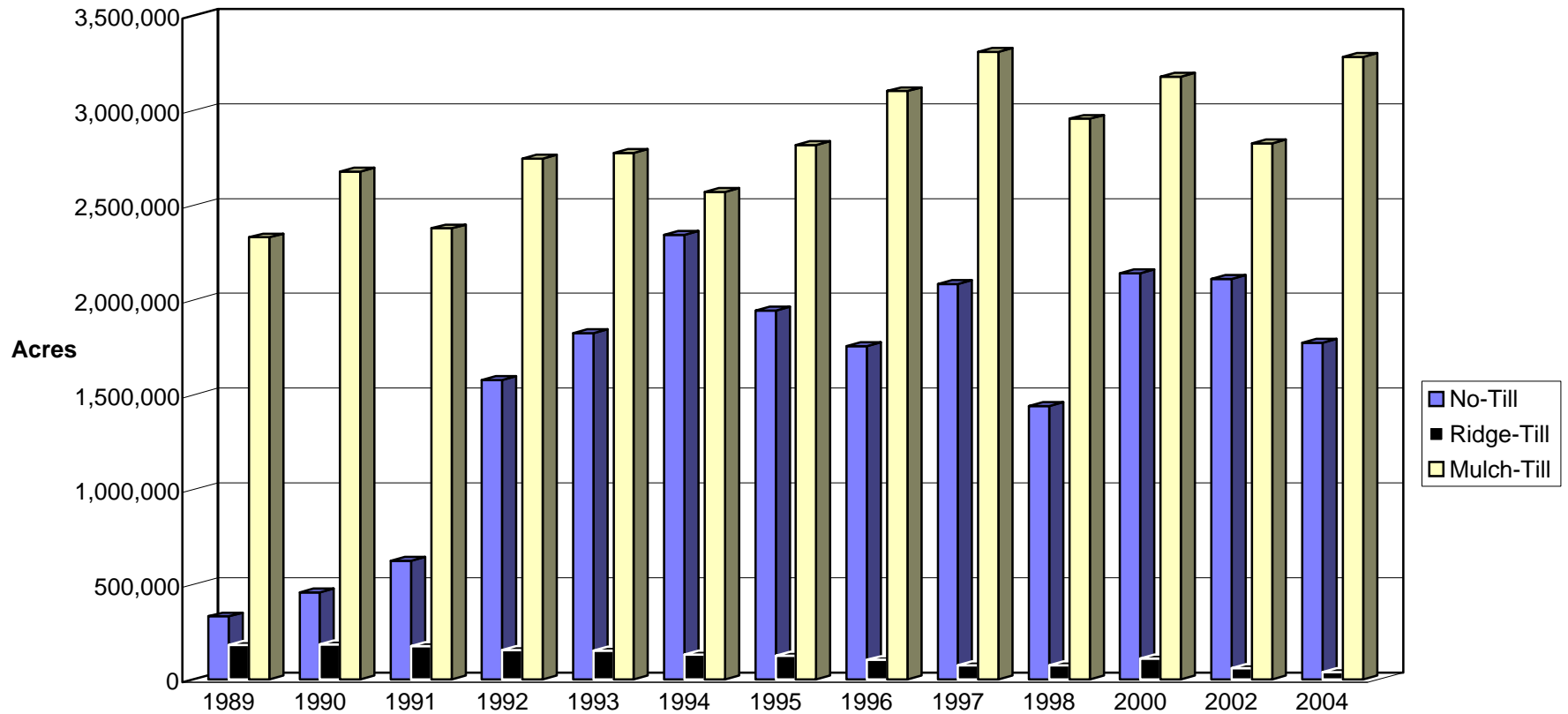


Conservation Tillage Practices

Practices Leaving >30% Residue

Totals for Iowa--Full Season Corn



Data Source: Conservation Technology Information Center (CTIC), National Crop Residue Management Surveys
 (Beginning in 1998, the National Crop Residue Management Surveys have been published only in even numbered years)

Prepared by: Agronomy Department, Iowa State University