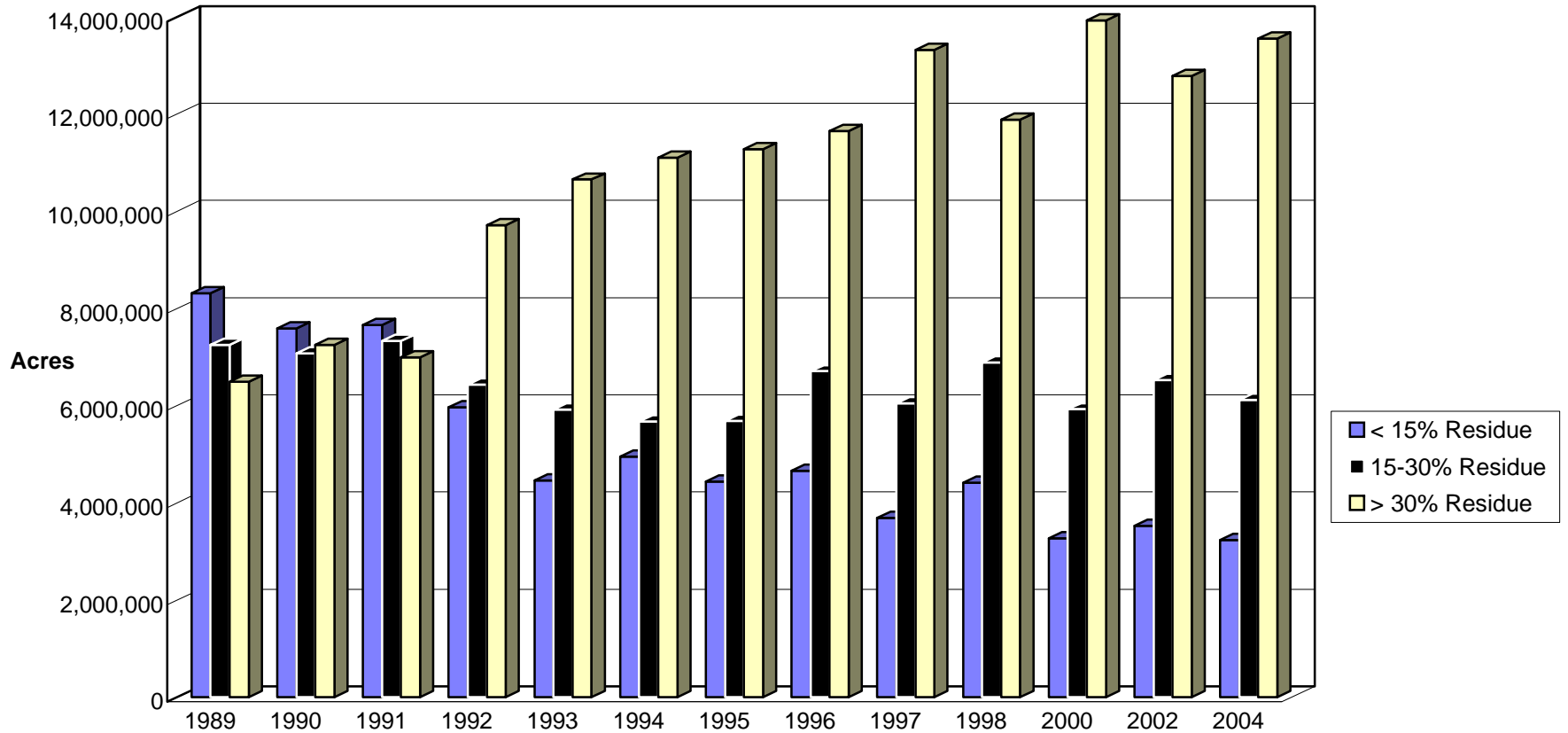


# Residue Remaining After Planting

## All Tillage Practices

### Totals for Iowa--Annual Crops



Data Source: Conservation Technology Information Center (CTIC), National Crop Residue Management Surveys  
 (Beginning in 1998, the National Crop Residue Management Surveys have been published only in even numbered years)

Prepared by: Agronomy Department, Iowa State University